

Journal Pre-proof

A first Case of Meningitis/Encephalitis associated with SARS-Coronavirus-2

Takeshi Moriguchi, Norikazu Harii, Junko Goto, Daiki Harada, Hisanori Sugawara, Junichi Takamino, Masateru Ueno, Hiroki Sakata, Kengo Kondo, Natsuhiko Myose, Atsuhito Nakao, Masayuki Takeda, Hiroataka Haro, Osamu Inoue, Katsue Suzuki-Inoue, Kayo Kubokawa, Shinji Ogihara, Tomoyuki Sasaki, Hiroyuki Kinouchi, Hiroyuki Kojin, Masami Ito, Hiroshi Onishi, Tatsuya Shimizu, Yu Sasaki, Nobuyuki Enomoto, Hiroshi Ishihara, Shiomi Furuya, Tomoko Yamamoto, Shinji Shimada



PII: S1201-9712(20)30195-8

DOI: <https://doi.org/10.1016/j.ijid.2020.03.062>

Reference: IJID 4068

To appear in: *International Journal of Infectious Diseases*

Received Date: 18 March 2020

Accepted Date: 25 March 2020

Please cite this article as: Moriguchi T, Harii N, Goto J, Harada D, Sugawara H, Takamino J, Ueno M, Sakata H, Kondo K, Myose N, Nakao A, Takeda M, Haro H, Inoue O, Suzuki-Inoue K, Kubokawa K, Ogihara S, Sasaki T, Kinouchi H, Kojin H, Ito M, Onishi H, Shimizu T, Sasaki Y, Enomoto N, Ishihara H, Furuya S, Yamamoto T, Shimada S, A first Case of Meningitis/Encephalitis associated with SARS-Coronavirus-2, *International Journal of Infectious Diseases* (2020), doi: <https://doi.org/10.1016/j.ijid.2020.03.062>

This is a PDF file of an article that has undergone enhancements after acceptance, such as the addition of a cover page and metadata, and formatting for readability, but it is not yet the definitive version of record. This version will undergo additional copyediting, typesetting and review before it is published in its final form, but we are providing this version to give early visibility of the article. Please note that, during the production process, errors may be discovered which could affect the content, and all legal disclaimers that apply to the journal pertain.

© 2019 Published by Elsevier.

A first Case of Meningitis/Encephalitis associated with SARS-Coronavirus-2

Takeshi Moriguchi¹, Norikazu Harii², Junko Goto¹, Daiki Harada¹, Hisanori Sugawara¹, Junichi Takamino¹, Masateru Ueno¹, Hiroki Sakata¹, Kengo Kondo¹, Natsuhiko Myose¹, Atsuhito Nakao³, Masayuki Takeda⁴, Hirotaka Haro⁵, Osamu Inoue⁶, Katsue Suzuki-Inoue⁷, Kayo Kubokawa⁸, Shinji Ogihara⁹, Tomoyuki Sasaki⁷, Hiroyuki Kinouchi¹⁰, Hiroyuki Kojin¹¹, Masami Ito¹¹, Hiroshi Onishi¹², Tatsuya Shimizu¹², Yu Sasaki¹², Nobuyuki Enomoto¹³, Hiroshi Ishihara¹⁴, Shiomi Furuya¹¹, Tomoko Yamamoto¹¹, Shinji Shimada¹⁵

1. Department of Emergency and Critical Care Medicine, University of Yamanashi, Faculty of Medicine, 1110, Shimokato, Chuo, Yamanashi, 409-3898 Japan
2. Department of Community and Family Medicine, University of Yamanashi, Faculty of Medicine, 1110, Shimokato, Chuo, Yamanashi, 409-3898 Japan
3. Dean, University of Yamanashi, Faculty of Medicine, 1110, Shimokato, Chuo, Yamanashi, 409-3898 Japan
4. Department of Urology, University of Yamanashi, Graduate School of Medical Sciences, 1110, Shimokato, Chuo, Yamanashi, 409-3898 Japan
5. Department of Orthopaedic Surgery, University of Yamanashi, Faculty of Medicine, 1110, Shimokato, Chuo, Yamanashi, 409-3898 Japan
6. Division of Infection Control and Prevention, University of Yamanashi Hospital, 1110, Shimokato, Chuo, Yamanashi, 409-3898 Japan
7. Department of Clinical and Laboratory Medicine, University of Yamanashi, Faculty of Medicine, 1110, Shimokato, Chuo, Yamanashi, 409-3898 Japan
8. Department of Nursing, University of Yamanashi Hospital, 1110, Shimokato, Chuo, Yamanashi, 409-3898 Japan
9. Central Laboratory Unit / Division of Infection Control and Prevention, University of Yamanashi Hospital, 1110, Shimokato, Chuo, Yamanashi, 409-3898 Japan
10. Department of Neurosurgery, University of Yamanashi, Faculty of Medicine, 1110, Shimokato, Chuo, Yamanashi, 409-3898 Japan
11. Department of Clinical Quality and Medical Safety Management, University of Yamanashi Hospital, 1110, Shimokato, Chuo, Yamanashi, 409-3898 Japan
12. Department of Radiology, University of Yamanashi, Faculty of Medicine, 1110, Shimokato, Chuo, Yamanashi, 409-3898 Japan

13. First Department of Internal Medicine, University of Yamanashi, Faculty of Medicine, 1110, Shimokato, Chuo, Yamanashi, 409-3898 Japan
14. Second Department of Internal medicine, University of Yamanashi, Faculty of Medicine, 1110, Shimokato, Chuo, Yamanashi, 409-3898 Japan
15. President, University of Yamanashi, 1110, Shimokato, Chuo, Yamanashi, 409-3898 Japan

Address (all affiliations)

1110 Shimokato Chuo Yamanashi, Japan 409-3898, TEL : +81-55-273-1111

Correspondence:

Takeshi Moriguchi. Email: tmoriguchi@yamanashi.ac.jp

Address: 1110 Shimokato Chuo Yamanashi, Japan 409-3898, TEL : +81-55-273-9812,
FAX : +81-55-273-6716

Highlights

- Novel coronavirus (SARS-Coronavirus-2:SARS-CoV-2) which emerged in Wuhan, China, has spread to multiple countries rapidly.
- This is the first case of meningitis associated with SARS-CoV-2 who was brought in by ambulance.
- The specific SARS-CoV-2 RNA was not detected in the nasopharyngeal swab but was detected in a CSF.
- This case warns the physicians of patients who have CNS symptoms.

Abstract

Novel coronavirus (SARS-Coronavirus-2:SARS-CoV-2) which emerged in Wuhan, China, has spread to multiple countries rapidly. We report the first case of meningitis associated with SARS-CoV-2 who was brought in by ambulance due to a convulsion accompanied by unconsciousness. He had never been to any foreign countries. He felt generalized fatigue and fever (day 1). He saw doctors nearby twice (day2 and 5) and was prescribed Laninamivir and antipyretic agents, His family visited his home and found that he was unconsciousness and lying on the floor in his vomit. He was immediately transported to this hospital by ambulance (day 9). Under emergency transport, he had transient generalized seizures that lasted about a minute. He had obvious neck stiffness. The specific

SARS-CoV-2 RNA was not detected in the nasopharyngeal swab but was detected in a CSF. Anti- HSV 1 and varicella-zoster IgM antibodies were not detected in serum samples. A brain MRI showed hyperintensity along the wall of right lateral ventricle and hyperintense signal changes in the right mesial temporal lobe and hippocampus, suggesting the possibility of SARS-CoV-2 meningitis. This case warns the physicians of patients who have CNS symptoms.

Key words: SARS-CoV-2, COVID-19, meningitis, infections, polymerase chain reaction,

Introduction

Novel coronavirus (SARS-Coronavirus-2:SARS-CoV-2) emerged in December 2019 in Wuhan, China, and has become a global health emergency. (Wang D. et al., 2020, Wang Y. et al., 2020) A preliminary report warned that SARS-CoV-2 could have neuroinvasive potential because some patients showed neurologic symptoms such as headache, nausea, and vomiting. (Li et al., 2020) In order to end the pandemic of SARS-Coronavirus-2 diseases, the diagnosis of the disease must be prompt and not overlook any findings.

This brief report describes the first case of the patient, which brought in by the ambulance due to a convulsion accompanied by unconsciousness, was diagnosed with aseptic encephalitis with SARS-CoV-2 RNA in cerebrospinal fluid.

Case

A 24-year-old man.

He has never been to foreign countries. He felt headache, generalized fatigue and fever in late February 2020 (day 1). On day 2, he consulted a doctor nearby. There, he was prescribed Laninamivir and antipyretic agents under the diagnosis of influenza due to his clinical symptoms in spite of the negative result of the diagnostic test. Three days later (day 5), he visited another clinic because of the worsening of his previous symptoms, headache, and sore throat. He underwent chest x-ray examination and blood test resulted in negative findings. On day 9, he was found lying on the floor with consciousness disturbance. He was immediately transferred to our hospital by ambulance. During emergency transport, he presented with transient generalized seizures for about a minute.

Upon arrival at our hospital, he had a Glasgow coma scale (GCS) of 6 (E4 V1 M1) with hemodynamically stability. He had obvious neck stiffness. Blood investigation showed an increased white cell count, neutrophil dominant, relatively decreased lymphocytes, increased C-reactive protein. Subsequent investigations included systemic CT demonstrating no evidence of brain edema. The chest CT showed that there was small ground glass opacity on the right superior lobe and both sides of the inferior lobe. On a further lumbar puncture examination, his cerebrospinal fluid was clear and colorless, and the initial pressure was greater than 320 mmH₂O. The CSF cell count was 12/ μ L-- 10 mononuclear and 2 polymorphonuclear cells without red blood cells. Anti- HSV 1 and varicella-zoster IgM antibodies were not detected in serum samples. The RT-PCR test for SARS-CoV-2 was performed using a nasopharyngeal swab and CSF because we assumed that a SARS-CoV-2 was involved in the outbreak. Although the specific SARS-CoV-2 RNA was not detected in the nasopharyngeal swab, it was detected in CSF (Supplementary Table 1).

During emergency treatment, the endotracheal intubation and mechanical ventilation were required because of multiple epileptic seizures. He was transferred to the ICU with the clinical diagnosis of meningitis and viral pneumonia. After the ICU admission, he was empirically started on intravenous (IV) ceftriaxone, vancomycin, aciclovir and steroids. He also underwent intravenous administration of Levetiracetam for seizure. Favipiravir had been administered via nasogastric tube for 10 days since day2. Brain MRI was performed 20 hours after admission to the ICU (Figure.1). Diffusion weighted images (DWI) showed hyperintensity along the wall of inferior horn of right lateral ventricle. Fluid-attenuated inversion recovery (FLAIR) images showed hyperintense signal changes in the right mesial temporal lobe and hippocampus with slight hippocampal atrophy. Contrast-enhanced imaging showed no definite dural enhancement. These findings indicated right lateral ventriculitis and encephalitis mainly on right mesial lobe and hippocampus. A differential diagnosis was considered to be hippocampal sclerosis accompanying post convulsive encephalopathy. Besides, T2-weighted image showed pan-paranasal sinusitis.

At day 15, we are continuing treatment for bacterial pneumonia and impaired consciousness due to encephalitis associated with SARS-CoV-2 in intensive care unit. We declare no competing interests. Patient relative's written consent was obtained for publication.

SPECIMEN COLLECTION

Clinical specimens for SARS-CoV-2 diagnostic testing were obtained in accordance with guidelines of National Institute of Infectious Diseases in Japan. Nasopharyngeal swab specimens were collected with synthetic fiber swabs; each swab was inserted into a separate sterile tube containing 1 ml of phosphate-buffered saline (PBS) supplemented with 0.5% BSA. Spinal fluid was collected in sterile specimen containers. Specimens were immediately examined at the Yamanashi University Hospital Laboratory Department or stored at 4°C until ready for examination.

DIAGNOSTIC TESTING FOR SARS-CoV-2

Viral RNA was extracted from clinical specimen using magLEAD 6gC (Precision System Science Co., Ltd.). The SARS-CoV-2 RNA was detected using AgPath-ID™ One-Step RT-PCR Reagents (AM1005) (Applied Biosystems) on CobasZ480 (Roche). The diagnostic assay for SARS-CoV-2 has three nucleocapsid gene targets (Supplementary Materials).

SPECIMEN TESTING FOR SARS-CoV-2

The nasopharyngeal swabs obtained from this patient on day 1 (66 minutes after admission) were negative for N and N2 (Supplementary Table 1). As for spinal fluid, however, 1 sample out of 2 (1/2) on day 1 (84 minutes after admission) was positive for N, but not for N2. Therefore, we re-examined the same specimen again and found that 2/2 samples were positive for N, but not for N2. Again, the nasopharyngeal swabs were negative for both N and N2.

Discussion

Our report described the first case of meningitis/encephalitis associated with SARS-CoV-2. This case shows the neuroinvasive potential of the virus and that we cannot exclude SARS-CoV-2 infections even if the RT-PCR test for SARS-CoV-2 using the patient's nasopharyngeal specimen is negative.

In 2002-2003, Severe Acute Respiratory Syndrome (SARS) pandemic appeared and SARS-CoV was isolated as the pathogen and as the new family of the human coronaviruses. (Drosten et al., 2003, Ksiazek et al., 2003) Over a number of years, human coronaviruses including SARS-CoV was identified as possible pathogens for pathologies outside the respiratory systems. (Gu et al., 2005, Raj et al., 2014)

A report shows that SARS-CoV genome sequences were detected in the brain of all SARS autopsies with real-time RT-PCR. (Gu et al., 2005) Importantly, the signals were strong in the hippocampus where we found inflammation in the patient's brain.

Recent study claims that the genomic sequence is similar between SARS-CoV and SARS-CoV-2 (Yu et al., 2020), especially the receptor-binding domains of SARS-CoV is structurally similar to that of SARS-CoV-2. (Lu et al., 2020) This may lead that SARS-CoV and SARS-CoV-2 shares the ACE2 as a receptor. That might be the reason why SARS-CoV and SARS-CoV-2 might invade the same place in human brains.

In the present case, MRI demonstrated the abnormal findings of medial temporal lobe including hippocampus suggesting encephalitis, hippocampal sclerosis or post convulsive encephalitis. Hippocampal sclerosis would be unlikely because he had no episodes of mesial temporal epilepsy in his past history. In addition, this case was presented with significant paranasal sinusitis. Although the relation between sinusitis and retrograde trans-synaptic transfer is obscure, we should pay attention to nasal and paranasal condition in the diagnosis and treatment for SARS-CoV-2 infection.

We claim that this case is important because this case shows that the unconscious patients are potentially infected by SARS-CoV-2 and might cause the horizontal infection. In order to end the pandemic of SARS-CoV-2 diseases, the diagnosis of the disease must be prompt and not overlook any findings. Finding the suspected patient is the first step of a preventive measure against the pandemic. It should be kept in mind that the symptoms of the encephalitis or cerebropathia may be the first indication, as well as respiratory symptoms, to find the hidden SARS-CoV-2 patients.

Declaration of interests

The authors declare that they have no known competing financial interests or personal relationships that could have appeared to influence the work reported in this paper.

Acknowledgments

The authors would like to thank Yamanashi University Hospital SARS-CoV-2 nursing team and respiratory medical team that are fighting against the illness, Mr. Charles R. Allala for carefully proofreading the manuscript, Prof. Kohji Moriishi for detailed knowledge about coronavirus, Prof. Zentaro Yamagata for ethical considerations, and Dr. Kenichi Matsuda for helpful advice for everything about the medical treatment for the critically ill and discussions over the case.

This research did not receive any specific grant from funding agencies in the public, commercial, or not-for-profit sectors.

Journal Pre-proof

References

- Drosten C, Gunther S, Preiser W, van der Werf S, Brodt HR, Becker S, et al. Identification of a novel coronavirus in patients with severe acute respiratory syndrome. *The New England journal of medicine* 2003;348(20):1967-76.
- Gu J, Gong E, Zhang B, Zheng J, Gao Z, Zhong Y, et al. Multiple organ infection and the pathogenesis of SARS. *The Journal of experimental medicine* 2005;202(3):415-24.
- Ksiazek TG, Erdman D, Goldsmith CS, Zaki SR, Peret T, Emery S, et al. A novel coronavirus associated with severe acute respiratory syndrome. *The New England journal of medicine* 2003;348(20):1953-66.
- Li YC, Bai WZ, Hashikawa T. The neuroinvasive potential of SARS-CoV2 may be at least partially responsible for the respiratory failure of COVID-19 patients. *Journal of medical virology* 2020.
- Lu R, Zhao X, Li J, Niu P, Yang B, Wu H, et al. Genomic characterisation and epidemiology of 2019 novel coronavirus: implications for virus origins and receptor binding. *Lancet* 2020;395(10224):565-74.
- Raj VS, Osterhaus AD, Fouchier RA, Haagmans BL. MERS: emergence of a novel human coronavirus. *Current opinion in virology* 2014;5:58-62.
- Wang D, Hu B, Hu C, Zhu F, Liu X, Zhang J, et al. Clinical Characteristics of 138 Hospitalized Patients With 2019 Novel Coronavirus-Infected Pneumonia in Wuhan, China. *JAMA : the journal of the American Medical Association* 2020.
- Wang Y, Wang Y, Chen Y, Qin Q. Unique epidemiological and clinical features of the emerging 2019 novel coronavirus pneumonia (COVID-19) implicate special control measures. *Journal of medical virology* 2020.
- Yu F, Du L, Ojcius DM, Pan C, Jiang S. Measures for diagnosing and treating infections by a novel coronavirus responsible for a pneumonia outbreak originating in Wuhan, China. *Microbes and infection* 2020.

Figure Legends

Figure.1

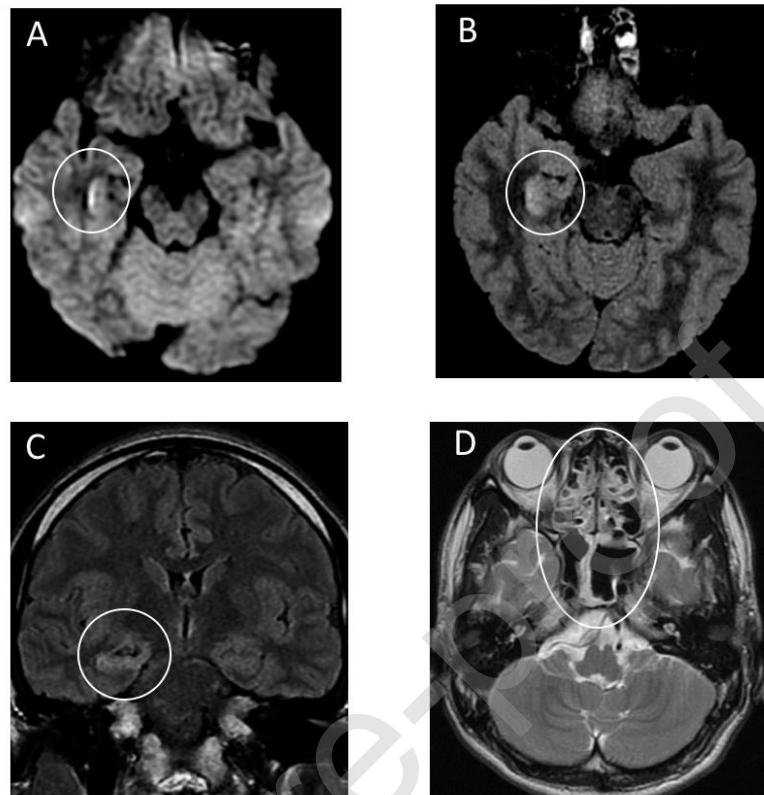


Figure 1. Brain MRI performed 20hours after admission.

A: Diffusion weighted images (DWI) showed hyperintensity along the wall of inferior horn of right lateral ventricle.

B,C: Fluid-attenuated inversion recovery (FLAIR) images showed hyperintense signal changes in the right mesial temporal lobe and hippocampus with slight hippocampal atrophy. These findings indicated right lateral ventriculitis and encephalitis mainly on right mesial lobe and hippocampus.

D: T2-weighted image showed pan-paranasal sinusitis.